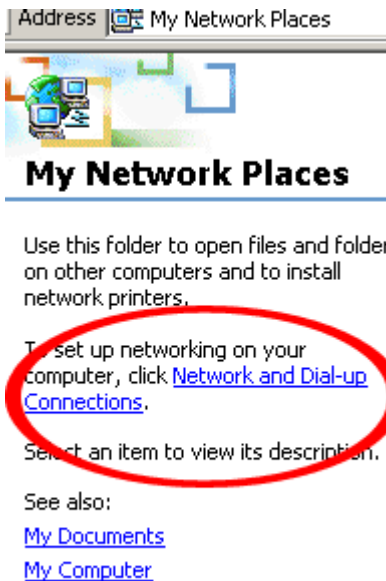


Setting up your vpn connection on windows 2000 or XP in continuation from installing x.509 certificate on windows (please do not continue if you have not installed your x.509 certificate):
Instructions provided by <http://www.netdigix.com>

1: double click on your “My Network Places” icon on the desktop.



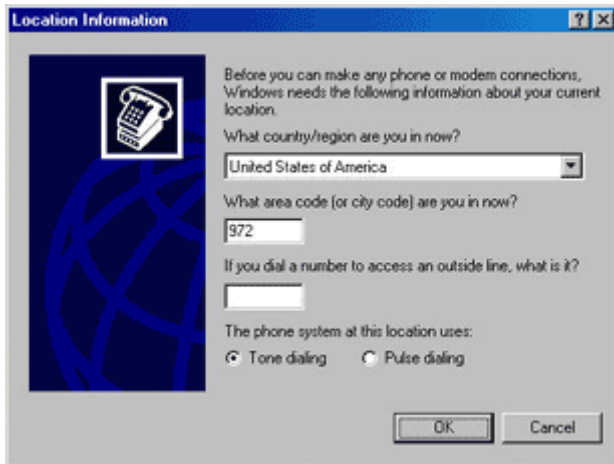
2: Click on Network and Dial-up Connections as shown below.



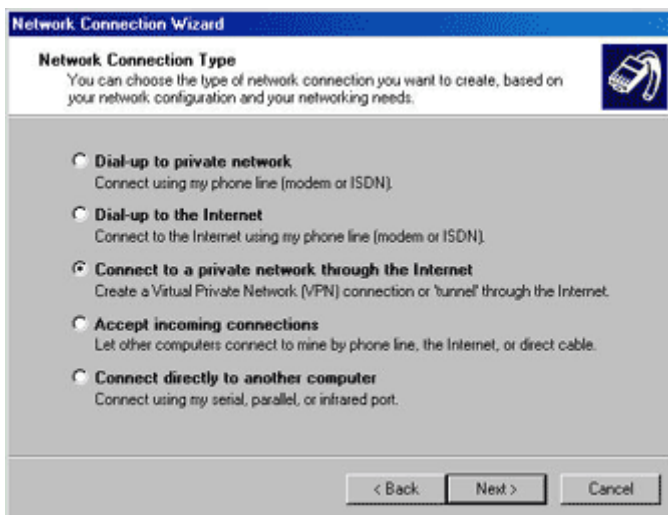
3: Double click on the “Make New Connection” icon as shown below



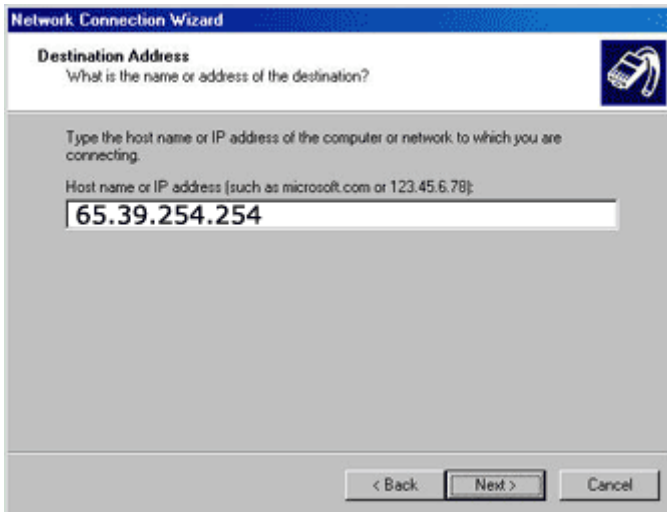
4: enter your area code then click the “OK” button. Then on the next screen click the “Next >” button.



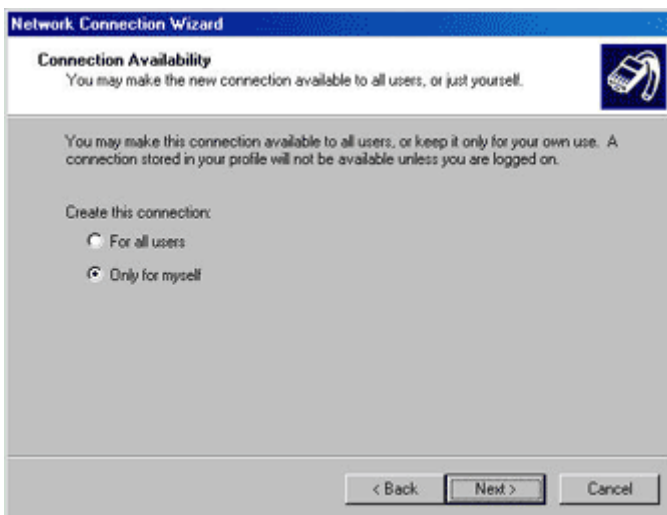
5: Select the “Connect to a private network through the Internet as shown below: then click the “Next >” button



6: Type in the vpn servers ip address as shown below then click in the “Next >” button.



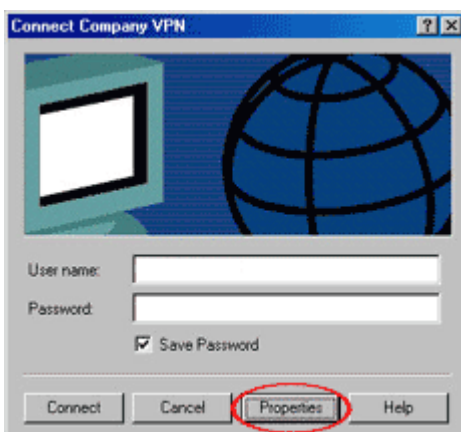
7: Select the “Only for myself” option then click the “Next >” button



8: Name your vpn to anything you like (for example Hosting vpn) as shown below then click the “Finish” button



9: Click on the Properties button as shown below



10: Make sure that on the General tab the ip address is correct.



11: Click on the Options tab and make sure it has these settings

Dialing options:

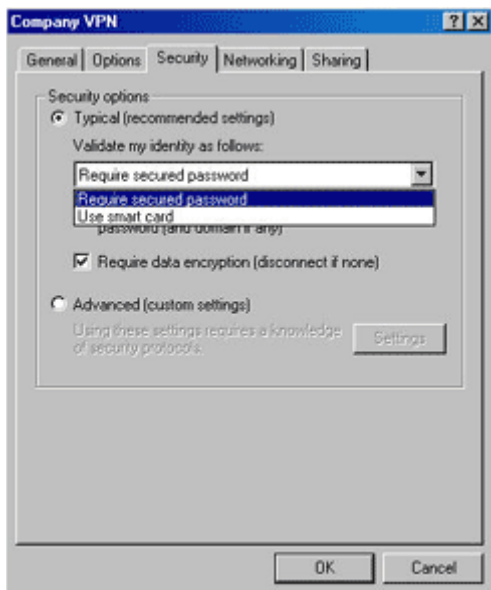
- Display progress while connections (Checked)
- Prompt for name and password, certificate etc. (checked)
- Include windows logon domain (un-checked)

Redialing options:

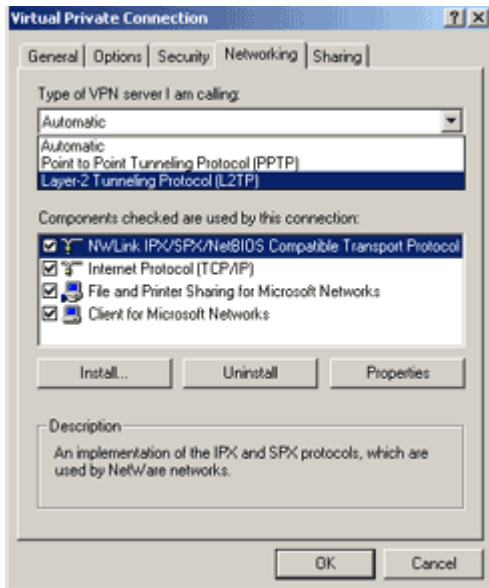
- Do not change any options here (should be set 3,1 minute, never as shown below)



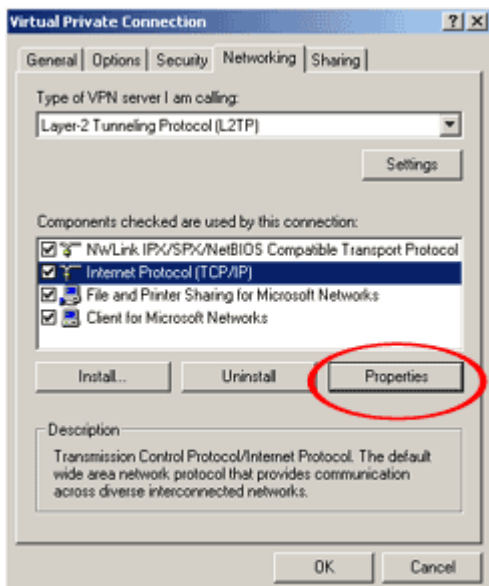
12: Click on the Security Tab
Select from the pull down menu the option:
“Require secured password”
and make sure that you have a check mark in the box for
“Require data encryption [disconnect if none]”



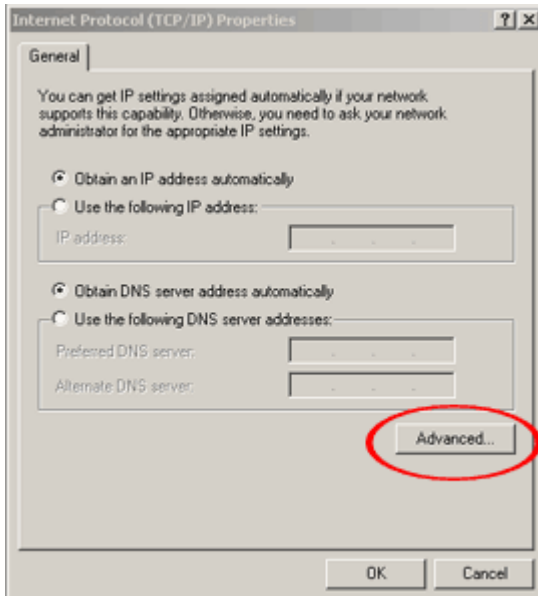
13: Click on the “Networking” tab then select from the pull down menu the option:
“Layer-2 Tunneling Protocol [L2TP]”



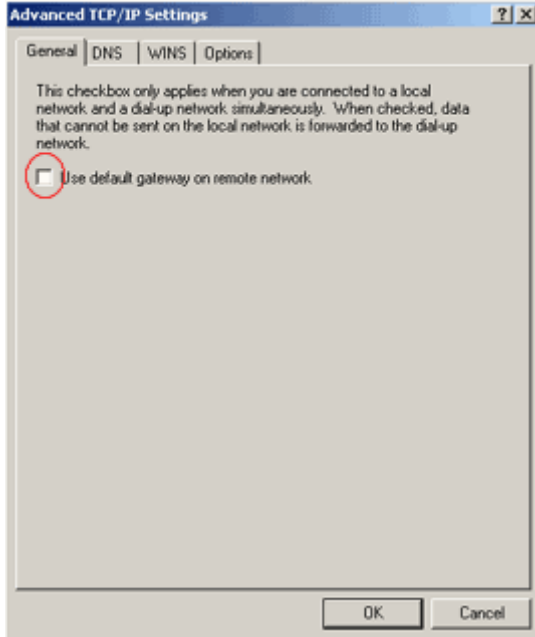
14: Highlight the Internet Protocol [TCP/IP] as shown below. Then click on the “Properties” button (circled in red below).



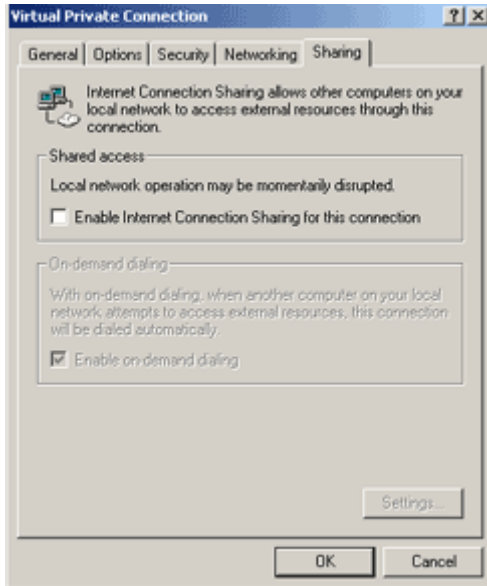
15: Make sure the option “Obtain an IP address automatically” is selected as shown below then click the “Advanced..” button



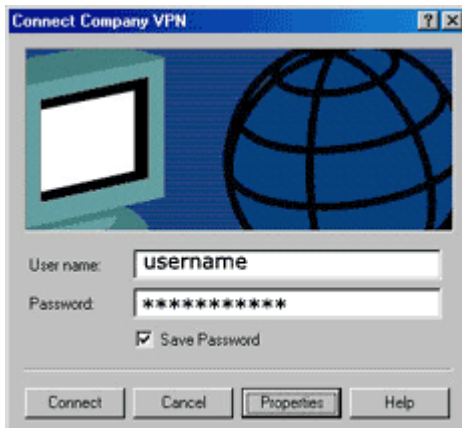
16: Un-check the “Use default gateway on remote network” option as shown below then click the “OK” button. Then click the “OK” button again.



17: Select the “sharing” tab and make sure that “Enable Internet Connection Sharing for this connection” is un-checked. Then click the “OK” button.



18: Now enter the username and password as shown below (this is provided to you by your support department). Then click the “Connect” button.



19: You will see some connecting messages and should now be connected to your VPN server.