

Installing your x.509 certificate key windows 2000 and XP for VPN install
Instructions provided by <http://www.netdigix.com>

For windows 2000 you must install the high encryption pack located here:
<http://www.microsoft.com/windows2000/downloads/recommended/encryption/default.asp>

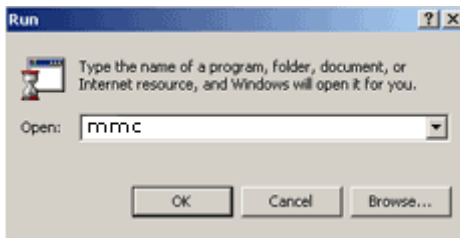
1: click the start button



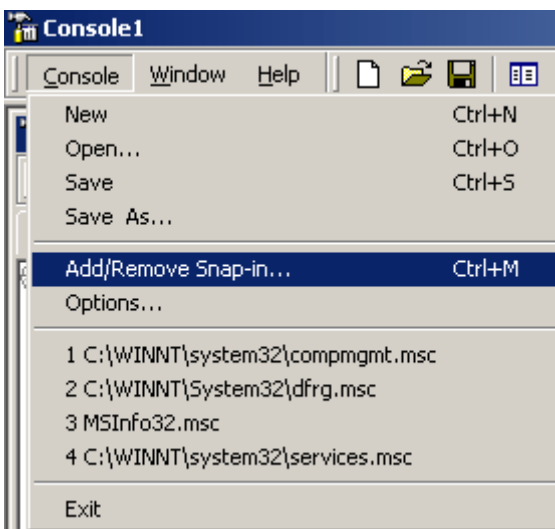
2: select the run... option



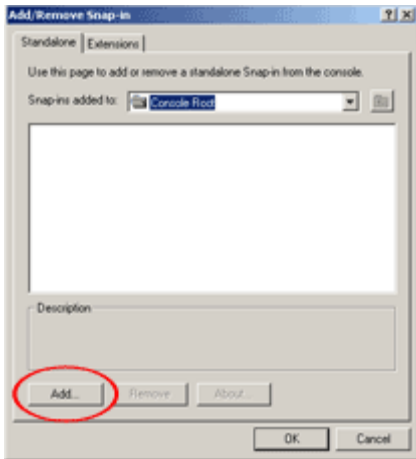
3: Type mmc in the text box



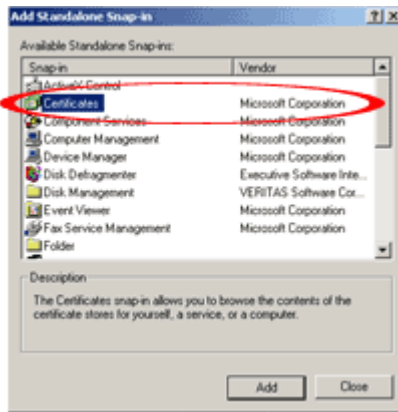
4: click "Console" menu then "Add\Remove Snap-in"



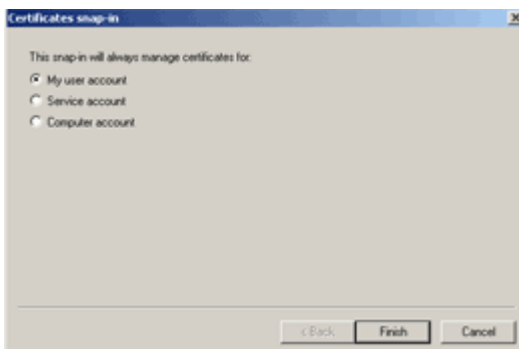
5: Click “add” as shown below



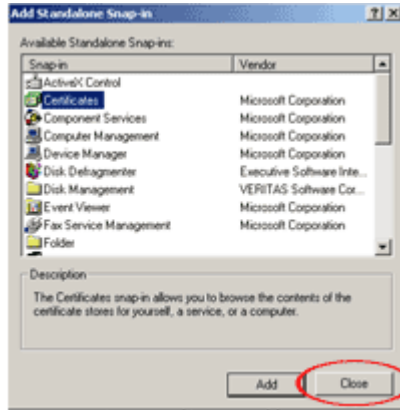
6: Select “certificates” then click the “add” button



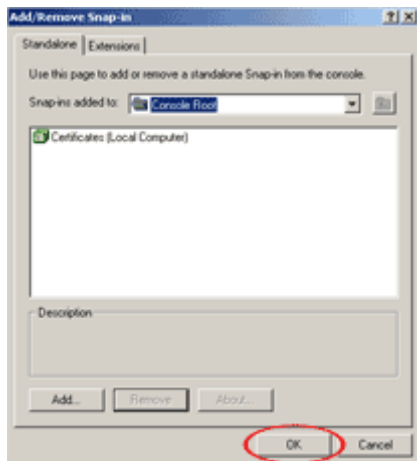
7: Select the “My user account” then click the “Finish” button



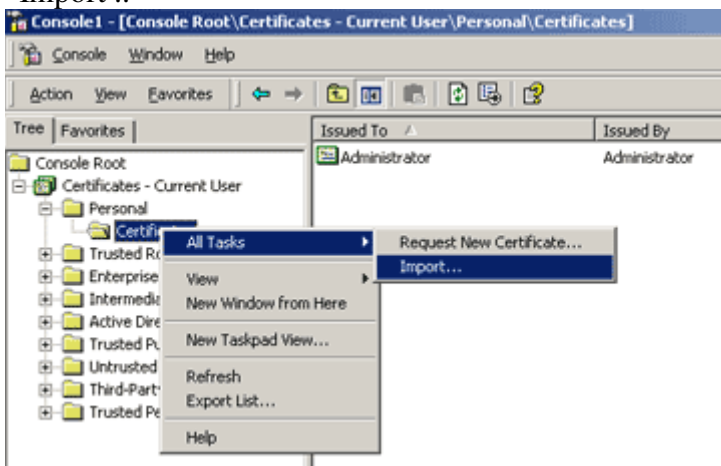
8: Click the “Close” button



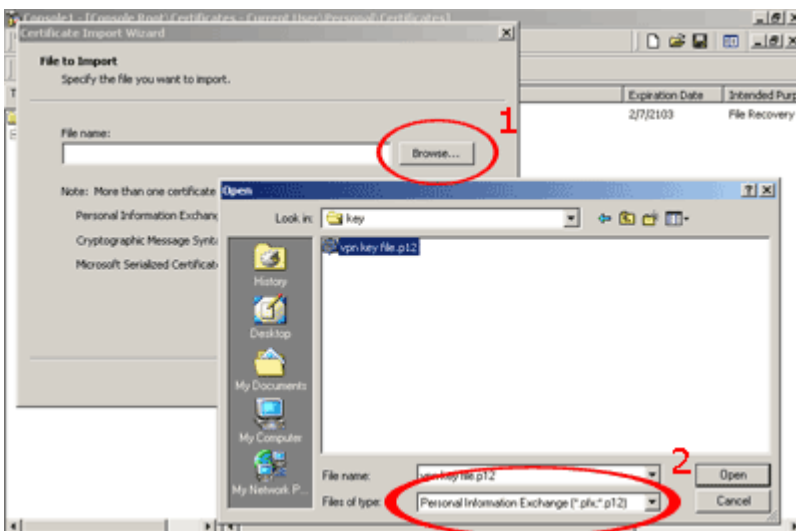
9: Click the “OK” button



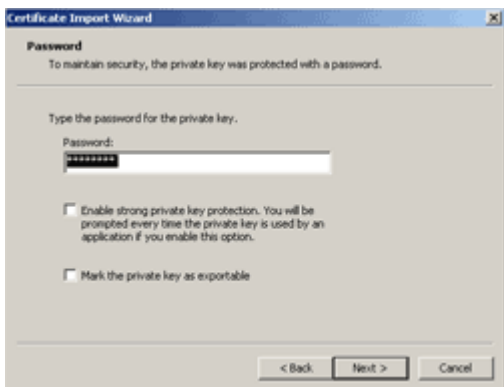
10: expand the “Certificates – Current User by clicking one time on the + (it should now turn to a – symbol as shown below) click one time on the “Personal folder” to show the Certificates folder. Now right mouse click the Certificates folder select the “All Tasks” and then Select (left mouse click) “Import ..”



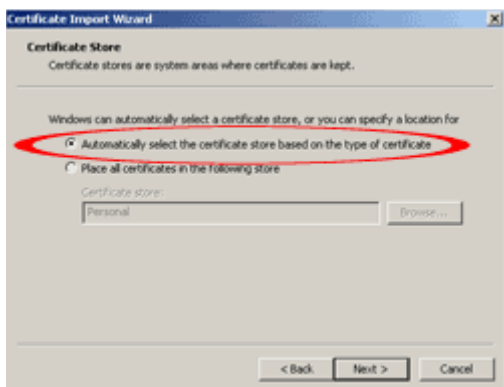
11: select “Browse” (as shown below as 1) make sure the number 2 option below is set to "Files of type" to "Personal Information Exchange (*.pfx, *.p12)". select your certificate file (it should have the extension .p12) then click the “open” button



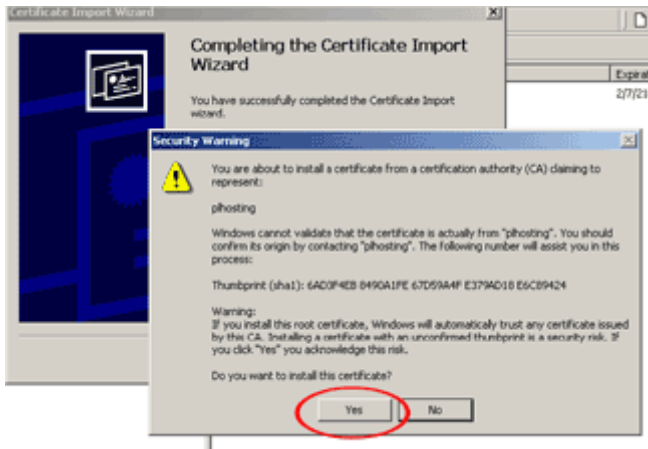
12: Type in your keys password. It should have been provided to you if you do not have this password please contact support.



13: Select the option "Automatically select the certificate store". Then click the "Next" button. Then the "Finish" button.



14: you will then be prompted if you really want to install this certificate you will click yes.



Click Ok when prompted that the import was successful

15: you have now successfully installed your certificate. Please move on to the instructions to setup your VPN.